

Flexible Plate



Modular flexible plate without anchoring

Patented surface enabling vehicles to cross all types of slippery soils: grass, sand, gravel or mud



ADVANTAGES



- > Non-slip surface
- > Non-skid surface
- > Grip improvement on soil up to 20%
- > Flexible
- > Light
- > Robust
- > Permeable
- > 100% recyclable
- > UV and weather resistant
- > Customizable

Technical specifications

Dimension		Plate weight	Reference White
Width	Lenght		
1,05 m 3,5 ft	1 m 3,25 ft	10 kg 22 lbs	220521
1,05 m 3,5 ft	2 m 6,5 ft	20 kg 44 lbs	220563

Mobi-track™ MM3V25 can support up to 80 tons (depending on the type of ground)

Tensile strength*	<100 kN/m 10 t/m 680lb/ft
Weight	10 kg/m ² 2 lb/sqft
Temperature : use & storage*	-40°C / + 80°C -104°F / +176°F
Fire resistance	B _{FL} -s1 (EN 13501-1)

*Non-contractual data



2 years warranty



ISO 9001 & ISO 14001 certification



Mobility : high grip & lift



- Traffic**
- > Cars
 - > Trucks
 - > Construction machines



- > **Technical surface** enabling traction to wheeled vehicles



- > **Preservation of soil condition**

Easy installation and low maintenance

FAST INSTALLATION

Mobi-track™ is easy to deploy because it has no anchoring.
Unpack the mat on the surface to be crossed by your vehicle, repeat the operation many times as necessary!

EASY MAINTENANCE

Use a broom, a leaf blower or a high pressure water jet to clean Mobi-track™.

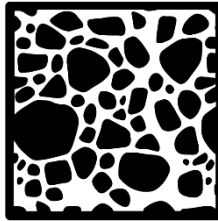
Store Mobi-track™ in a dry and clean place.



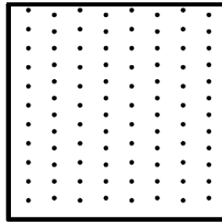
Usage on any type of ground



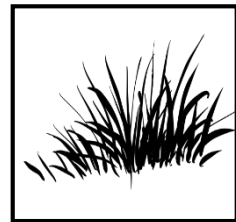
MUD



PEBBLE



SAND



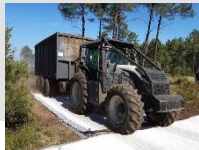
GRASS

What are our additional products ?

Mobi-vehicle™ Access mat A2X



Mobi-vehicle™ Access mat MM3V25



Mobi-deck™ Rigid panel



Traction-mat™ Recovery mat



 info@mobi-mat.com